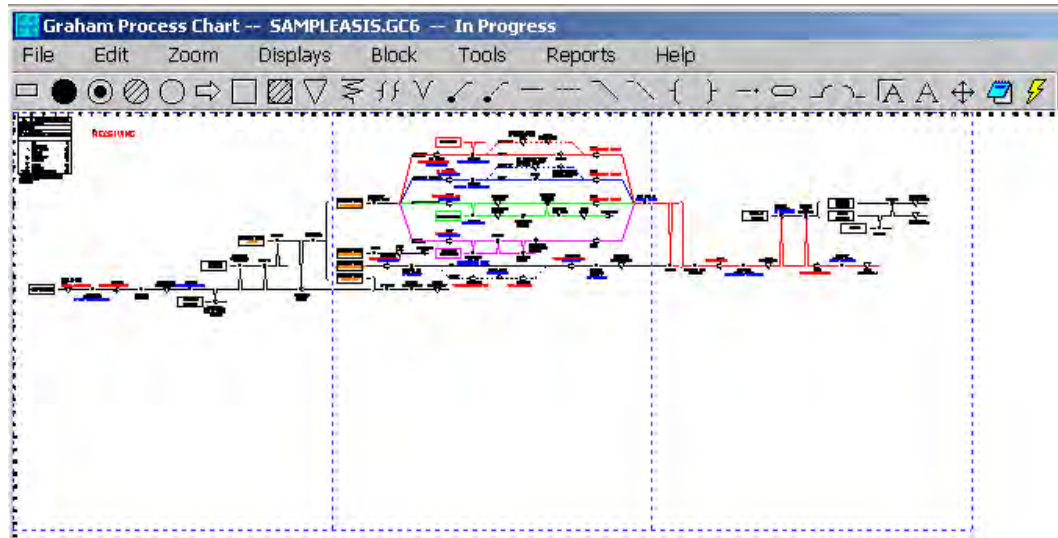


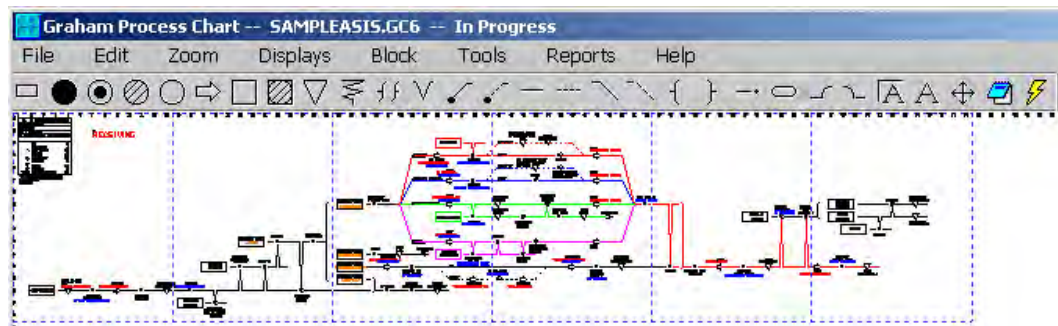
Printing Graham Process Charts

Charts can be printed using any Windows printer driver. Unlike most presentation applications, Graham charts are completely scalable — you choose the page size and the size of the chart when you print. If you have an impact printer or a plotter that handles continuous form paper, the charts can be printed on a single long strip!

Here is a chart with 70 steps set up to print on 3 pages...



Change the number of pages to 6 in the Print Setup Window and the chart spans 6 pages!



Pricing

Professional Edition
Single License - \$495.00 US
10-user license - \$4455.00 US (The 10-user licenses include full documentation for 10 users.)
Upgrade from any earlier version - \$89.00 US
Upgrade from Basic Edition - \$305.00 US

Site License
2-year license - \$7500.00 US (The Site License allows the licensee to an unlimited number of seats within a designated site.)
2-year Renewal fee - \$2500.00 US.
Enterprise Extension - Extend beyond your site license location for \$199.00/seat

Prices are subject to change.

Call 800-628-9558 to order or purchase online at www.worksimp.com

© Copyright 2005, The Ben Graham Corporation. All rights reserved.

The Ben Graham Corporation Graham Process Charting Software

Are your processes charted?

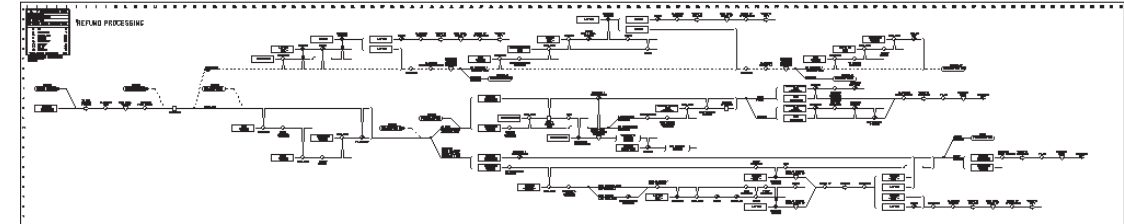
Do the charts show the step-by-step processing of each item in the process?
(Items are documents, files, computer screens, parts, products, emails, etc)
Are the value-added steps and control points clearly identified?
Are they clear enough that anyone can understand them?
Do they make improvement opportunities obvious?

Then, of course, you are using Graham Process Charts.

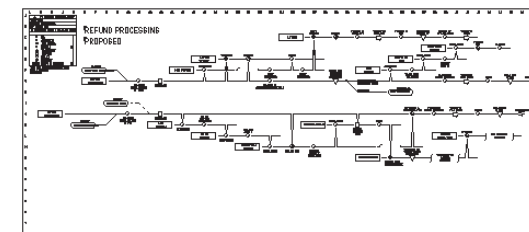
Are your charts routinely prepared in one day and updated in an hour?
Do they also generate Standard Operating Procedures in narrative form?

Then, of course, you are using Graham Process Charting Software.

AS-IS



TO-BE



Clients include...

Caterpillar, Eastman Chemical, Ford Motor Company, General Motors, Mayo Clinic, Sara Lee Bakeries, Campbell Soup Company, NASA, The US Navy, The US Air Force, US Coast Guard, Cryptologic Systems Group (USAF), The U.S. Bureau of Drugs, The U.S. Treasury, The US Dept. of Education, The US EPA, State of North Dakota, The State of Illinois Dept. of Public Aid, Dept. of National Defence (Canada), Canada Post, Canadian Penitentiary Service, Washtenaw County, Hennepin County, Ramsey County, McHenry County, Martin County-FL, The City of San Diego, The City of Cincinnati, The City of Dayton, The City of Boca Raton, The City of Ottawa, Boston University, The University of Western Ontario, Oklahoma State University, University of Delaware, Gregory Poole, Rust Tractor, Alban Tractor, Hawthorne Machinery, Holt of Ohio, Foley Equipment, Finning Canada, Carolina Tractor, Wheeler Machinery, Walker Machinery, Sunbelt Power Systems, Holt Co. of Texas, Patten Tractor, Empire Southwest, Finning (UK), Thompson Machinery, H. O. Penn, Finning Chile S.A., Beckwith Machinery, Atlas-Copco, 3M Canada Ltd., Westinghouse, Nortel Networks, Manitoba Tel, New Brunswick Tel, SaskPower, Enmax, Oklahoma Gas and Electric, Con Edison, Newport News Shipbuilding, Abbott Laboratories, Syntex, Schwarz Pharma, Ross Laboratories, Standard Register, Mead, Hillcrest Medical Center, Robinson Memorial Hospital, Johnson and Johnson, Georgia Pacific Corporation, Algoma Steel, Cannellon Coal, Potash Corporation of Saskatchewan, Zurn Industries, Owatonna Tool Co., Babcock Energy Limited, ABB, EG&G Idaho, EG&G Florida, Rogers Cable TV, Suncor, Syncrude, The Bank of Nova Scotia, Canadian Imperial Bank of Commerce, Southwest Bank Shares, MBNA, Mitsui-Babcock Energy Limited (UK), Petroleos de Venezuela, The Bank NT Butterfield & Fund Ltd.(Bermuda), Jamaica Ministry of Finance, L'Assurance-Vie Desjardins, Hartford Ins., American States Ins., CareFirst Blue Cross Blue Shield, Royal Insurance Group, Federated Insurance, Metropolitan Life, Great-West Life Assurance Co.

A better brand of process improvement.

www.processchart.com